



# MONTHLY MEMBERSHIP PROGRESS REPORT

District 19 G

Results as of: 01/31/2019

GMT: HOWARD HUDSON

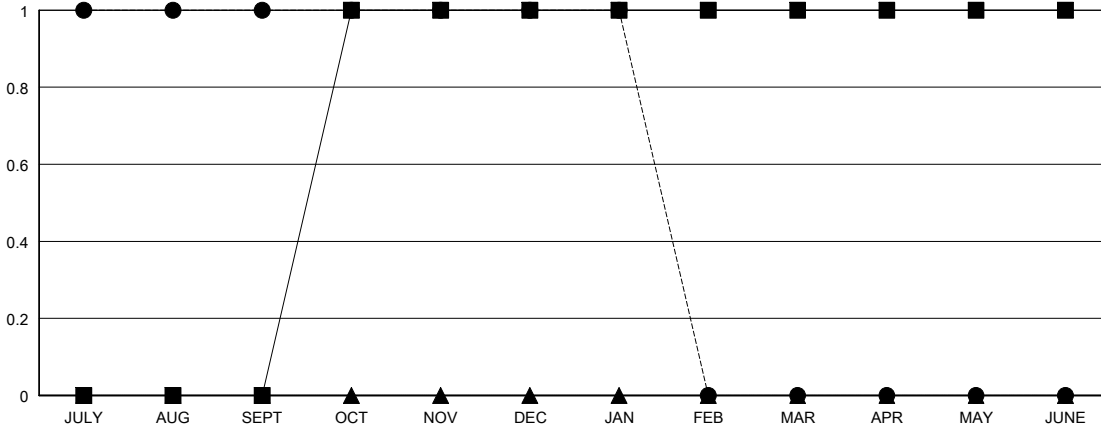
LOCATION WASHINGTON

GMT CA

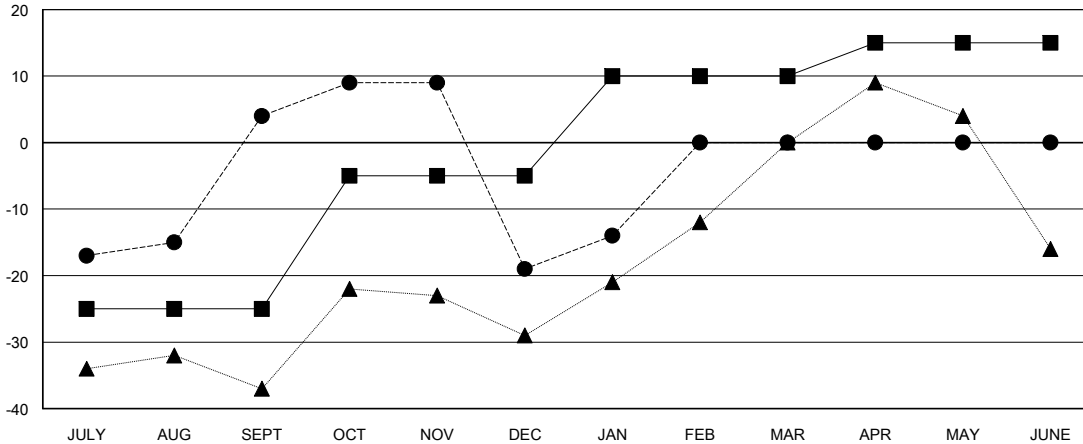
Clubs			
RESULTS FOR 2018-2019			
QUARTER	NEW CLUB GOAL	NEW CLUBS	DROPPED CLUBS
JULY/AUG/SEPT	0	1	0
OCT/NOV/DEC	1	0	0
JAN/FEB/MAR	0	0	0
APR/MAY/JUNE	0	0	0

Members			
RESULTS FOR 2018-2019			
QUARTER	MEMBER GROWTH NET GOAL	MEMBER GROWTH ACTUAL	DROPPED MEMBERS ACTUAL (including transfers)
JULY/AUG/SEPT	-25	97	64
OCT/NOV/DEC	20	26	47
JAN/FEB/MAR	15	14	7
APR/MAY/JUNE	5	0	0

GOALS AND ACTUAL NEW CLUBS CUMULATIVE



GOALS AND ACTUAL MEMBERS CUMULATIVE



DROPPED CLUBS: 0
------------------

21 CLUBS OF 40 ADDED 1 OR MORE NEW MEMBERS

GENDER DISTRIBUTION	
MALE	822 (62.94%)
FEMALE	484 (37.06%)
Women Percentage Fiscal Year Goal: 40%	

DROPPED MEMBERS	
DECEASED	12
CLUB CANCELLED	0
OTHER	106
<b>TOTAL</b>	<b>118</b>

[CLICK HERE FOR CUMULATIVE MEMBERSHIP DATA](#)

TOTAL FAMILY UNIT MEMBERS	346
FAMILY MEMBERS PAYING HALF DUES	177